

2024

TOOLBOX

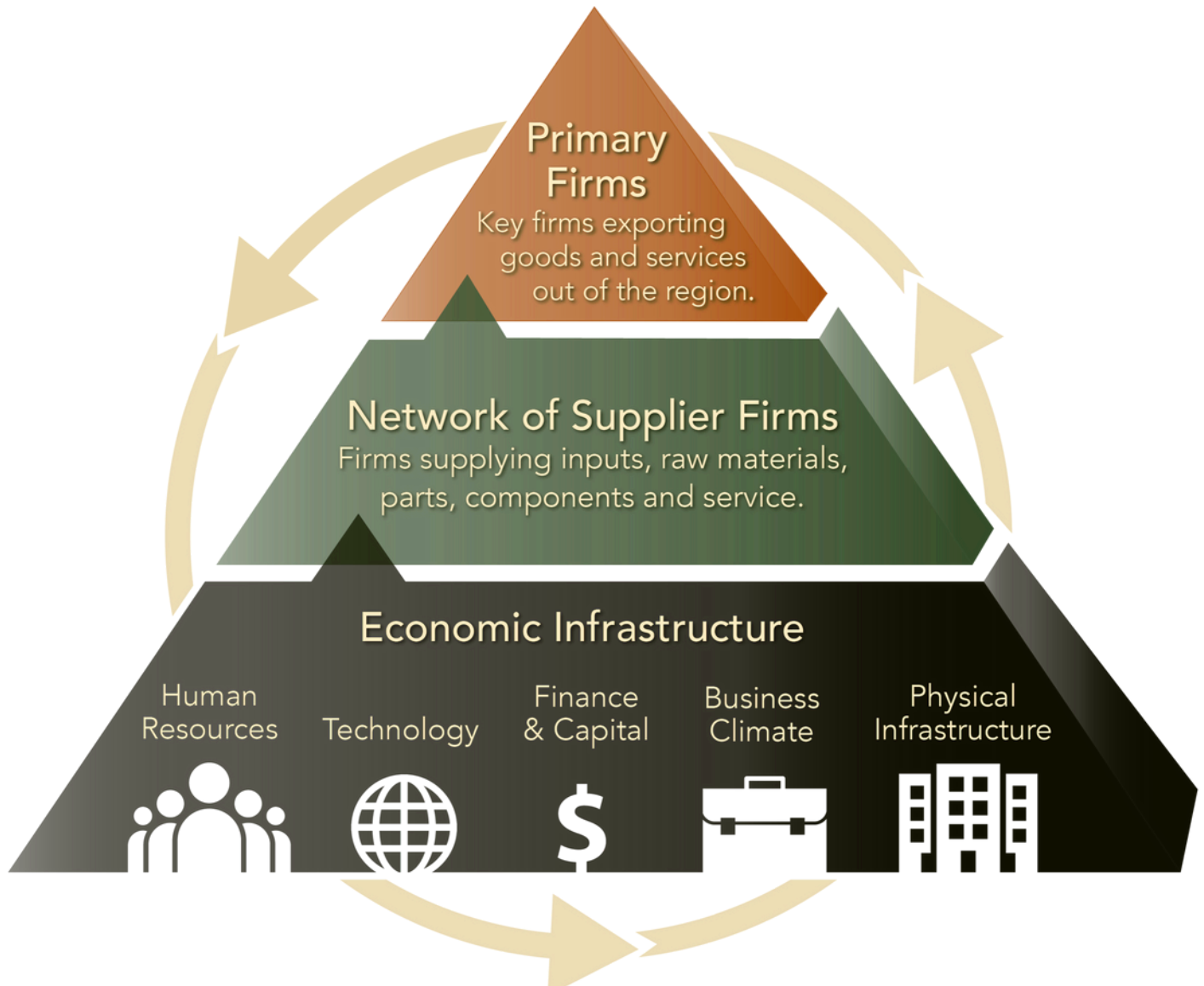
LIST OF RESOURCES



PREPARED BY:

edb | ECONOMIC
DEVELOPMENT
BOARD TACOMA
PIERCE COUNTY

Growing Great Jobs



Locate or expand a business in Pierce County

SITE SELECTION ASSISTANCE

The EDB works directly with businesses and consultants to provide key information and assistance to recruit primary employers in incorporated and unincorporated areas of Pierce County. For information on how we can help with your development project, contact Sarah Bonds at 253.284.5892 or sarah@edbtacomapierce.org.

BUSINESS RETENTION & EXPANSON

The EDB works directly with existing primary businesses to help them grow and expand in Pierce County. For assistance navigating tax incentives, financing programs, permitting, and for referrals to workforce training partners and other resources, contact Maddie Merton at 253.317.1903 or maddie@edbtacomapierce.org.

CLUSTER TEAM DEVELOPMENT

Tacoma-Pierce County's cluster teams focus on our region's key industries of Aerospace, Healthcare, Logistics and Technology. Clusters are geographically specific groups of interconnected companies. By clustering near each other, businesses can increase their productivity, accelerate innovation and stimulate new business formation. For more information, contact Tamsin Bell at 253.284.5889 or tamsin@edbtacomapierce.org.

INVESTPIERCECOUNTY.COM

Visit InvestPierceCounty.com to explore Pierce County's available commercial properties. For more information, please contact Sarah Bonds at 253.284.5892 or sarah@edbtacomapierce.org.

PERMITTING ASSISTANCE FOR CITY OF TACOMA

The City of Tacoma's Planning and Development Services Department is here to help you understand what permits are required and how to apply for them. Please visit Tacomapermits.org for more information. In-person, virtual or chat appointments are available.

PERMITTING ASSISTANCE FOR UNINCORPORATED PIERCE COUNTY

Pierce County's Economic Development Department offers assistance to businesses in unincorporated areas struggling with permit issues or needing permits to expand. For more information, contact Kevin Clegg at 253.798.6639 or kclegg@co.pierce.wa.us.

WASHINGTON STATE TAX INCENTIVES

A variety of existing and new tax incentives are available to help support business growth through WA State Department of Revenue. In 2024, new incentives include renewable energy/clean energy incentives.

G R O W
U R
N E

Globally connected by air, rail, water and road

SEA-TAC AIRPORT

Seattle-Tacoma International Airport, also referred to as Sea-Tac Airport, is the primary commercial airport serving the Puget Sound Region. Sea-Tac is a hub and international gateway to Asia and Europe.

PORT OF TACOMA

The Port of Tacoma is a major seaport and a top 10 U.S. container port. Its strategic location in the northwest corner of the U.S. and focus on efficiency and reliability make it among the largest container ports in North America. It is a major center for autos, bulk, break-bulk, and heavy-lift cargoes. For more information, contact the Port of Tacoma at 253.383.5841 or portinfo@portoftacoma.com.

BURLINGTON NORTHERN SANTE FE RAILWAY

BNSF Railway, a Class 1 railroad, connects Tacoma-Pierce County to key distribution points across North America.

UNION PACIFIC RAILWAY

Union Pacific, a Class 1 railroad, connects Tacoma-Pierce County to key distribution points across North America.

TACOMA RAIL

Tacoma Rail, a Class III railroad, provides freight switching rail services serving the Port of Tacoma, Frederickson, south Pierce County and parts of Thurston County. For more information, contact Alan Matheson at amatheson@cityoftacoma.org.

WA STATE DEPARTMENT OF TRANSPORTATION

WSDOT constructs, maintains, and regulates the use of the state's transportation infrastructure.

PIERCE TRANSIT

Pierce Transit provides outreach to employers to assist in providing vanpool, van share, transit, and other trip reduction services. For more information, contact Nathan BeVelle at nbevelle@piercetransit.org.

SOUND TRANSIT

Sound Transit plans, builds and operates express bus, light rail and commuter train services. For more information, contact Valerie Cortes at 253.303.3766 or valerie.cortes@soundtransit.org.

Reduce your overall cost of doing business in Pierce County

IMPACT WASHINGTON

Impact Washington is a non-profit organization that strengthens Washington manufacturers to make them more globally competitive. For more information, contact Shawn Baubata at 425.753.3689 or sbaubata@impactwashington.org.

PUGET SOUND ENERGY

You can lower your business's energy bills with PSE's commercial energy management programs. For more information, contact Christine Nhan at 253.229.0953 or Christine.Nhan@pse.com.

TACOMA PUBLIC UTILITIES

Tacoma Public Utilities offers assistance to businesses that are considering locating or expanding or looking for opportunities to lower their energy and water costs. For more information, contact Josh Newman at jnewman@cityoftacoma.org.

PIERCE COUNTY TRAFFIC IMPACT FEE EXEMPTION

Pierce County offers 100% exemptions to their Traffic Impact Fee for three specific uses in unincorporated regions of the county. Eligible facilities include manufacturing, corporate headquarters, and R&D centers. For more information, contact Kevin Clegg at 253.798.6639 or kclegg@co.pierce.wa.us.

WASHINGTON STATE MACHINERY AND EQUIPMENT (M&E) SALES/USE TAX EXEMPTION

Exemption on sales/use tax on machinery and equipment used directly in manufacturing or research (for manufacturers, processors for hire, or manufacturers who perform R&D).

WASHINGTON STATE REDUCED BUSINESS & OCCUPATION (B&O) TAXES FOR MANUFACTURERS OF SEMICONDUCTOR MATERIALS

Available to manufacturers or processing for hire of semiconductor materials. For purposes of the reduced B&O tax rate "Semiconductor materials" means silicon crystals, silicon ingots, raw polished semiconductor wafers, and compound semiconductor wafers.

WASHINGTON STATE BUSINESS & OCCUPATION (B&O) TAX EXEMPTION/DEDUCTION FOR FOOD PROCESSING/MANUFACTURING

Available to fresh fruit and vegetables, dairy products, and seafood manufacturers.

Expert support for every export need

FOREIGN TRADE ZONE #86

The Port of Tacoma's Foreign Trade Zone #86 gives importers and exporters a flexible way to ship, store, manipulate, and add value to goods while delaying or eliminating payment of U.S. Customs duties. For more information, contact Brook Fitzsimmons at 253.888.4782 or bfitzsimmons@portoftacoma.com.

NW SEAPORT ALLIANCE

The NW Seaport Alliance business team draws on diverse expertise and backgrounds with international experience and is ready to deliver best-in-class service to Port customers. For more information, contact the Northwest Seaport Alliance at 800.657.9808 or info@nwseaportalliance.com.

NORTHWEST TRADE ADJUSTMENT ASSISTANCE CENTER

Sponsored by the U.S. Department of Commerce, NWTAAAC provides match-funding to help American companies compete with imports. NWTAAAC has matching funds up to \$75,000 for improvement projects, including developing new market strategies, new product development, cutting costs, improving distribution, etc. For more information, contact Joe Meyer at 206.673.4605 or joe@nwtaac.org.

U.S. EXPORT ASSISTANCE CENTER

Sponsored by the U.S. Department of Commerce, this office provides businesses assistance to companies looking to export products internationally.

WASHINGTON STATE EXPORT ASSISTANCE

The Department of Commerce offers businesses an experienced trade team that provides a range of support services, including advocacy, consulting, risk mitigation, market research, trade missions and trade show support, business matchmaking and custom programs, all designed to help Washington companies open doors to trade overseas and increase sales.

WORLD TRADE CENTER TACOMA

The World Trade Center Tacoma (WTC Tacoma) can open the world's markets for you and your company. As a member of the World Trade Center's Association, we have direct access to the largest business network in the world and WTC Tacoma is the lone trade service WTC in the Pacific Northwest. For more information, contact Michael Fowler at 206.795.6644 or mfowler@asiaaccess.us.



Where aerospace companies get their wings

REDUCED BUSINESS & OCCUPATION (B&O) TAX RATE FOR AEROSPACE

B&O tax rate reduced by 40% for manufacturers of commercial airplanes or component airplanes and aerospace tooling manufacturers. The rate applies to both manufacturing activity and the subsequent sale of the manufacturer product by the manufacturer.

AEROSPACE INDUSTRY BUSINESS & OCCUPATION (B&O) TAX CREDIT FOR PREPRODUCTION DEVELOPMENT EXPENDITURES

B&O tax credit for qualified expenditures in research, design and engineering activities related to the development of aerospace products or models by manufacturers of commercial airplanes or component parts of commercial airplanes. The B&O tax credit is equal to 1.5% of qualified pre-production development expenditures.

AEROSPACE INDUSTRY BUSINESS & OCCUPATION (B&O) TAX CREDIT FOR PROPERTY TAXES PAID

B&O tax credit equal to the property/leasehold taxes paid on new buildings, the land upon which the new building is located, and property taxes attributable to the renovation or expansion of buildings used exclusively in the manufacturing of commercial airplanes or component parts of commercial airplanes.

AEROSPACE INDUSTRY SALES/USE TAX EXEMPTION FOR COMPUTER HARDWARE, SOFTWARE & PERIPHERALS

Sales/use tax exemption for manufacturers of commercial airplanes or component parts of commercial airplanes for computer hardware, software and computer peripherals used primarily in the development, design and engineering of such products, and charges for the labor and services related to the installation of such equipment.

TAX EXEMPTION FOR CONSTRUCTION OF FACILITIES USED TO MANUFACTURE COMMERCIAL AIRPLANES

Sales/use tax exemption for the construction of new facilities and new parts of facilities that will be used primarily to manufacture commercial airplanes, the fuselages of commercial airplanes, and the wings for commercial airplanes.

WASHINGTON STATE EXPORT VOUCHER PROGRAM STEP GRANT

With business travel and trade shows resuming, businesses who export could receive \$10,000 annually to pay for related expenses through the STEP Program Grant from the Washington State Department of Commerce. Interested applicants can apply for funds on an annual basis to pay for items such as fees to attend trade shows, ship demo products overseas, and more.



The South Sound's Tech Hub

WASHINGTON STATE BUSINESS & OCCUPATION (B&O) TAX CREDIT FOR NEW EMPLOYMENT OF INTERNATIONAL SERVICE ACTIVITIES

Washington State provides an opportunity to receive a B&O tax credit of \$3,000 for up to four years to individuals who offer international services. These services include computer, data processing, legal, accounting and tax preparation, engineering, architectural, business consulting, business management, or financial services in specific geographical areas. Eligible activities comprise the creation of a permanent full-time job in international services situated in a Community Empowerment Zone (CEZ) or a designated International Services District.

WASHINGTON STATE SALES & USE TAX INCENTIVE FOR NON-RURAL DATA CENTERS

Business or tenant who meets certain qualifications can apply for a certificate that exempts them from sales and use tax when purchasing eligible server equipment and power infrastructure for the computer data center. The exemption applies to nonrural counties, which are those with a population greater than 800,000 based on the April 1, 2021, office of financial management population estimates. These include King, Pierce, and Snohomish counties.

SCHOOL OF ENGINEERING & TECHNOLOGY AT UW TACOMA

The School of Engineering & Technology at the University of Washington Tacoma focuses on the rapid development of high-technology academic programs to serve the State of Washington. The school serves as the home for computer science, computer engineering, and information technology programs. Through innovative partnerships with area companies, the school helps students gain practical work experience to meet continually changing industry needs.

EDB TECHNOLOGY CLUSTER ACCELERATION TEAM

Thriving tech clusters play a crucial role in driving innovation, enhancing competitiveness, and boosting economic growth. Areas that have well-established clusters tend to experience increased job opportunities, better salaries, and greater wealth generation. In Pierce County, a collaborative effort between industry leaders, academic institutions, nonprofits, and government entities is underway to transform the region into a technology hub. Initiatives have included raising the regional profile by showcasing tech success stories, hosting the South Sound Tech Conference, and closing the wealth and opportunity gaps in this industry sector. To learn more about the Technology Cluster Acceleration team, contact Tamsin Bell at tamsin@edbtacomapierce.org.



Launch your business in Pierce County

PIERCE COUNTY BUSINESS ACCELERATOR

The Pierce County Business Accelerator will serve entrepreneurs and business owners throughout Pierce County with a focus on BIPOC (Black, Indigenous, and People of Color) veteran, and women-owned businesses to help foster innovation and create wealth-building opportunities. For more information, contact Sara Garner at 253.798.6150 or sara.garner@piercecountywa.gov.

RAIN INCUBATOR

The Incubator is your place for resources and network connections to develop your research, launch your ideas and thrive as a researcher, scientist, or small business. For more information, contact 253.393.9922 or info@rainincubator.org.

THE WILLIAM FACTORY SMALL BUSINESS INCUBATOR

Assisting with access to capital, mentoring, workshops, strategy, and connections. Space is limited to receive one-on-one assistance, but workshops are free and open to the public. For more information, contact 253.722.5800.

TACOMA MARITIME INCUBATOR

Tacoma Maritime Innovation Incubator supports up to 7 startup businesses with mentorship and free rent. Contact info@maritimeblue.org for more information.

SMALL BUSINESS DEVELOPMENT CENTER (SBDC)

Sponsored by Washington State University, the SBDC provides no-fee, confidential, one-on-one counseling to small businesses on all management topics. For more information, contact Ann Zimmerman at 253.268.3339 or ann.zimmerman@wsbdc.org.

STARTUP253

Startup253 is a startup resource and networking hub, bringing together entrepreneurial leaders, venture capital and more to advance local startups and place the South Sound at the forefront of innovation and creativity. For more information, contact info@startup253.com.

VETERANS INCUBATOR FOR BETTER ENTREPRENEURSHIP (VIBE)

The VIBE at the University of Washington Tacoma supports military veterans' entrepreneurial aspirations and promotes their understanding of the modern startup life cycle. Many of its program offerings are free and open to members of the public. For more information, contact Thomas Kuljam at 253.692.5813 or tkuljam@uw.edu.

ACCELERATING CREATIVE ENTERPRISE (ACE)

Tacoma Arts Live's ACE initiative supports the growth of BIPOC/women entrepreneurs in the creative and cultural economy. For more information, contact Allyson Turk, Program Manager at 253.346.1398 or aturk@tacomaartslive.org.

.

Funding your business

INDUSTRIAL DEVELOPMENT REVENUE BONDS

Tax-exempt bond financing for employment generating manufacturing facilities is available through the public Economic Development Corporation of Pierce County (EDCPC) staffed by the EDB. Eligible costs include the acquisition of land, new machinery & equipment, construction or renovation of a building, architectural design, engineering work and financing arrangements. No public money backs the bonds. Borrower must be credit-worthy and able to receive financing commitment from a financial institution to back the bonds. Up to \$10 million in bonds can be issued for projects with total capital investment of \$2 million to \$20 million. For more information, contact Tamsin Bell at 253.284.5889 or tamsin@edbtacomapierce.org.

GROW AMERICA FUND

Grow America is a lending program to provide financing to help small businesses grow. Eligible costs include acquisition of commercial land, buildings, site, tenant improvements, purchase of machinery and equipment, working capital, debt restructuring, and soft costs. Loan sizes range from \$100,000 - \$5 million.

BUSINESS IMPACT NW

Business Impact NW is a community development financial institution which provides coaching, classes, and loans to entrepreneurs.

WASHINGTON STATE SMALL BUSINESS CREDIT INITIATIVE (SSBCI)

Administered by WA Department of Commerce and Heritage Bank Community Development Entity, SSBCI provides capital to small businesses and nonprofits throughout Washington, particularly those in historically underserved and under-banked communities.

CITY OF TACOMA LOAN PROGRAMS

The City of Tacoma offers finance programs to assist Tacoma-based business access capital for land/building, equipment, working capital, with loans ranging in size, rates, and requirements. For more information, contact Dierdre Patterson at 253.591.5621 or dpatterson3@cityoftacoma.org.

PIERCE COUNTY C-PACER PROGRAM

The C-PACER program allows owners and developers of eligible properties in Pierce County to obtain long-term financing, at a lower interest rate, for qualifying energy generation, energy efficiency, water conservation or resiliency projects. For more, contact cpacer@piercecountywa.gov.

VENTURES NONPROFIT

Ventures provides access to business training, capital, coaching, and hands-on learning opportunities for entrepreneurs with limited resources and unlimited potential.



South Sound business resources

GOVERNOR'S OFFICE OF REGULATORY INNOVATION & ASSISTANCE (ORIA)

The Office for Regulatory Innovation and Assistance helps businesses navigate Washington's environmental and business regulatory systems and works to improve those systems. For more information, contact 800.917.0043 or help@oria.wa.gov.

TACOMA-PIERCE COUNTY CHAMBER OF COMMERCE

Tacoma-Pierce County Chamber of Commerce is a private, membership-based organization that promotes economic prosperity in the South Sound. For more information, contact Andrea Reay at 253.682.1736 or andrear@tacomachamber.org.

DOWNTOWN TACOMA PARTNERSHIP

Downtown Tacoma Partnership (DTP) provides common services for property owners including security, maintenance, and improvements. For more information, contact David Schroedel at 253.682.1723 or davids@tacomachamber.org.

TACOMA FIRST 311 NON- EMERGENCY

Tacoma First 311 App enables users to report any non-emergency issues with direct feedback on actions taken or referred. This report rolls up to the City Manager and allows the city to utilize real time data for decision-making and resource allocation.

TACOMA GREEN ECONOMY

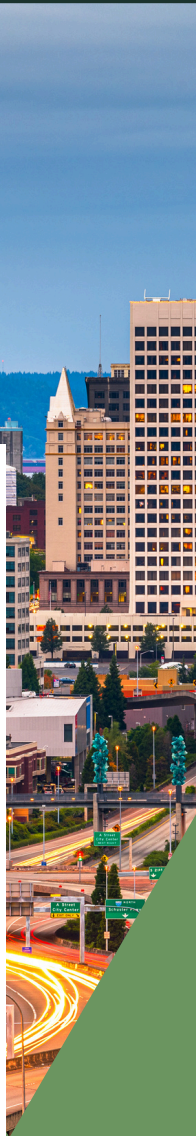
Tacoma is among the first cities in the United States to adopt a Green Economic Development Strategy, providing support and incentives for companies seeking improvements to existing processes and products, opportunities to test new products and technologies, or support for upskilling and reskilling workforce. For more information, contact Paul Bakker at 253.500.8169 or pbakker@cityoftacoma.org.

SOUTH SOUND MANUFACTURING INDUSTRIAL COUNCIL (MIC)

The Manufacturing Industrial Council promotes a positive business climate for manufacturing and related industries. The group is dedicated to safeguarding and improving people's lives, creating a sustainable environment, and providing the jobs that anchor Washington's economy. For more information, contact Ryan Spence at 253.682.1720 or ryans@tacomachamber.org.

WASHINGTON APEX ACCELERATOR

Government contracting assistance is available through Washington Procurement Technical Assistance Program (PTAC). Their efforts are designed to assist companies in receiving contracts with federal, state, and local agencies. For more information, contact Trena Payton at 253.964.1745 or tpayton@thurstonedc.com.



BIPOC business WA state & local programs

WASHINGTON STATE MINORITY BUSINESS DEVELOPMENT CENTER

The MBDA Business Center is operated by the City of Tacoma. The program's objective is to provide ongoing, quality assistance to minority businesses with rapid growth potential so that they can achieve greater participation in the development of the nation's commerce. For more information, Frank Boykin at 253.591.5239 or fboykin@cityoftacoma.org.

WASHINGTON STATE OFFICE OF MINORITY AND WOMEN'S BUSINESS ENTERPRISES

The Office of Minority and Women's Business Enterprises (OMWBE) certifies small businesses owned and controlled by minority, women, and socially and economically disadvantaged persons. OMWBE certifies business in order to increase contracting opportunities for certified businesses with state and local governments.

WASHINGTON STATE SMALL BUSINESS RESILIENCY NETWORK

Partners of the Small Business Resiliency Network (SBRN) provide culturally and linguistically relevant assistance and other business support services at no cost to entrepreneurs, small businesses and nonprofits – with an emphasis on those owned by historically marginalized and underserved persons – throughout Washington.

PIERCE COUNTY COMMUNITY NAVIGATOR PROGRAM

The Pierce County Community Navigator program is a partnership of Pierce County's Economic Development Department and seven community organizations to reach underserved small business owners in Pierce County, particularly those owned by BIPOC, women, veterans and people in rural communities. For more information, contact Sara Garner at 253.798.2335 or sara.garner@piercecountywa.gov.

PIERCE COUNTY COMMUNITY NAVIGATOR ORGANIZATIONS

The Navigator outreach team meets with businesses in the communities they serve and assists them with access to business resources. Assistance is available in multiple languages.

For more information, visit the following sites to be connected to the outreach specialist.

- Asia Pacific Cultural Center
- Mi Centro
- KWA
- The Black Collective
- Pacific Lutheran University - School of Business
- Washington APEX Accelerator
- Business Impact NW

BIPOC business local programs

ASIA PACIFIC CULTURAL CENTER

APCC is a 501(c)3 non-profit organization that was formed in November 1996. APCC represents 47 countries and cultures, offering programs and services honoring their distinct artistry, business protocols, history, and social practices.

BIPOC BUSINESS DIRECTORY

Pierce County BIPOC business directory to help people find and support BIPOC-, women- and veteran-owned businesses.

KOREAN WOMEN'S ASSOCIATION

The Korean Women's Association (KWA) is a registered 501 (c)(3) non-profit organization, providing multi-cultural, multi-lingual human services, regardless of race or ethnic background, to diverse communities through education, socialization, advocacy, and support.

MI CENTRO

Mi Centro is a community-based non-profit that works with Latino and Indigenous Native families. Explore their website and learn more about our educational programs, crisis intervention, family outreach services, Arts & Culture programming, or join our advocacy efforts that address the concerns and opportunities for our families and community.

TACOMA COMMUNITY HOUSE

Tacoma Community House (TCH) is a local non-profit organization that provides programs and services focused on education, employment, immigration, and advocacy to individuals and families.

THE BLACK BUSINESS MARKET

A community market that features a diverse and impressive group of black owned businesses. The TBBM gives black businesses a platform to gain exposure and diversify their clientele. TBBM brings the South Sound area together in the name of celebrating and supporting black business.

THE BLACK COLLECTIVE

The Tacoma-Pierce County Black Collective is a community of Black people dedicated to civic engagement through volunteer service.

THE TACOMA URBAN LEAGUE

The Tacoma Urban League (TUL) has provided critical support and services to the Tacoma-Pierce County community since its founding in 1968. With a mission to empower Black Americans and other disenfranchised groups to enter the economic and social mainstream, the TUL is focused on five key areas—housing, health care, education, employment, and justice.



Talent thrives in Tacoma-Pierce County

CUSTOM WORKFORCE STRATEGY

There are several workforce development, training, and tax incentives available to employers. For a tailored strategy or to request more information, please call the EDB at 253.383.4726.

WORKFORCE CENTRAL

WorkForce Central provides no-cost services such as: employee recruitment and applicant pre-screening, computerized job matching and referral of quality applicants, electronic job posting and resume banks, help with recruitment and layoffs, customized training packages to upgrade worker skills, information on wages, occupations, and business trends, and access to tax incentives. For more information, contact Samuel Bradshaw at 253.345.9037 or sbradshaw@workforce-central.org.

A SOUND BASE OF MILITARY TALENT

The South Puget Sound hosts two major military installations, Joint Base Lewis-McChord and Naval Base Kitsap, as well as the state headquarters of the Washington National Guard at Camp Murray. These institutions generate a steady stream of veterans, transitioning soldiers and families who bring significant contributions and talent to the region's workforce. Over 6,000 service members transition annually out of JBLM who often choose to put down roots in Pierce County.

UNIVERSITY OF WASHINGTON TACOMA

UW Tacoma is an urban-serving university, closely linked with the South Puget Sound. The campus impacts and informs economic development through community-engaged students and faculty.

MILGARD SCHOOL OF BUSINESS AT UNIVERSITY OF WASHINGTON TACOMA

The Milgard School of Business at UW Tacoma offers programs of study leading to a Bachelor of Arts in Business Administration, Master of Business Administration, Master of Science in Business Analytics, and Master of Accounting.

PACIFIC LUTHERAN UNIVERSITY

Pacific Lutheran University (PLU) is a private university offering liberal arts and professional school programs located in Parkland, WA. PLU offers undergraduate and graduate degree programs.

UNIVERSITY OF PUGET SOUND

The University of Puget Sound is a private liberal arts college located in Tacoma's North End offers undergraduate and graduate degree programs.



Workforce ready in Tacoma-Pierce County

BATES TECHNICAL COLLEGE

Bates Technical College is a public technical college located in Tacoma, WA. The college offers two-year Associate of Applied Science degrees, academic certificates, and industry certifications.

CLOVER PARK TECHNICAL COLLEGE

Clover Park Technical College is a public community college located in Lakewood, WA. The college offers more than forty programs in aerospace, advanced manufacturing, health sciences, human services, business, hospitality, science, technology, engineering, transportation, and trades.

PIERCE COLLEGE

Pierce College is a public technical college with campuses in Lakewood, Puyallup, and on Joint Base Lewis-McChord. The college offers four-year and two-year degree programs, academic certificates, and industry certifications.

TACOMA COMMUNITY COLLEGE

Tacoma Community College is a public community college with campuses in the west end of Tacoma and Gig Harbor, WA. The college offers two-year degree programs, academic certificates, and industry certifications.

CLOVER PARK TECHNICAL COLLEGE - CORPORATE TRAINING

Single point of contact for organizations to access customized corporate training, coaching and HR consulting services. Their training expertise includes leadership & management, communication skills, core business skills, software & IT training, process improvement and industrial & technical skills. For more information, please contact Don Sosnowski at 253.583.8860 or donald.sosnowski@cptc.edu.

SEED INTERNSHIPS

Seed Internships invests in the vibrant future of Pierce County by identifying exceptional college students and recent grads with ties to Tacoma and Pierce County and matching them with top, local employers through internships. Seed's 10-week, paid summer internship is paired with a robust curriculum of professional development – the program provides a tailored path to professional success for homegrown talent and builds a sustainable pipeline of talent for companies seeking to build more representative workplaces.

Federal & State workforce programs

AMERICA'S JOB CENTER AT JBLM

One-stop job center located at Joint Base Lewis McChord connects military service members with employment. America's Job Center at JBLM also will support service members' families, military retirees, federal employees and contractors, and reservists. The center offers robust job-searching services, training referrals, career counseling and transition resources, and the assistance comes from a variety of public, private and nonprofit sources,

ADVANCED MANUFACTURING APPRENTICESHIP COMMITTEE

The Advanced Manufacturing Apprenticeship Committee is a non-profit, registered apprenticeship organization serving Washington State aerospace and advanced manufacturing employers. AJAC offers high-growth, high-demand registered pre-apprenticeships, youth apprenticeships and adult apprenticeship program.

CUSTOMIZED TRAINING PROGRAM

Businesses participating in the Customized Training Program receive an 18-month loan and a WA Business and Occupation (B&O) tax credit equal to 50% of the cost of their own corporate training program. For more information, please contact Don Sosnowski at 253.583.8860 or donald.sosnowski@cptc.edu.

JOB SKILLS PROGRAM

OB SKILLS PROGRAM Businesses participating in the Job Skills Program (JSP) receive customized corporate training with funding from WA State through Clover Park Tech College. The business matches the grant with wages paid to trainees. For more information, please contact Don Sosnowski at 253.583.8860 or donald.sosnowski@cptc.edu.

WASHINGTON STATE B&O OR PUBLIC UTILITY TAX (PUT) CREDIT FOR HIRING UNEMPLOYED VETERANS

Businesses that hire unemployed veterans for positions in Washington State may qualify for up to \$1,500 credit against their B&O or public utility tax (PUT). For more information, contact WA State Department of Revenue at 360.705.6214.

WASHINGTON STATE LABOR & INDUSTRIES APPRENTICESHIP

Apprenticeship programs provide a way to train and develop new workers. Registered apprenticeship programs provide both on-the-job training with an employer and classroom instruction that develops highly-trained, knowledgeable, and skilled professionals. For more information, contact 360.902.5320.



Local workforce programs & incentives

CITY OF TACOMA NEW JOB CREATION

This five-year tax incentive is designed to stimulate business, reward businesses for creating good-paying jobs, and put our citizens to work. That means if you expand your workforce in Tacoma, you can get a credit against the B&O tax of up to \$2,250 annually. Minimum hourly wage is \$24.50/hr.

CITY OF TACOMA WORK OPPORTUNITY TAX CREDIT (WOTC)

This five-year tax incentive is targeted at encouraging employers to add new employment positions to their workforce and hire individuals with a disability identified as a vocational rehabilitation referral for the federal Work Opportunity Tax Credit (WOTC). Tacoma Businesses get a \$1,000 credit to apply to their B&O tax every year for five years if they create new, temporary, or full-time positions.

GOODWILL OF THE OLYMPICS & RAINIER REGION

Goodwill helps people with barriers to employment go to work by providing more than 30 training and educational opportunities, each designed to prepare entry into the competitive job world.

HIRE PIERCE COUNTY

A partnership of WorkForce Central, Pierce County Economic Development, and Goodwill of the Olympics and Rainier Region, Hire Pierce County: Next Gen Program provided young adults ages 16-24 years old with work experience through a paid internship program.

JOBS 253

Tacoma Public Schools incoming juniors and seniors have to opportunity to earn high school credit for graduation and the opportunity to gain meaningful work experience. The program provides students with a paid experience that develops leadership skills while benefiting our community in a meaningful way.

K-12 CTE PROGRAMS

Career & Technical Education (CTE) programs support local middle and high school programs that provide 21st-century, academic and technical skills for all students. Teachers participate in the professional development of curricula and instruction, standards and assessment, and academic integration.

PIERCE COUNTY SKILLS CENTER

The Pierce County Skills Center provides rigorous technical and professional experiences that prepare high school students for high demand, high wage jobs and post-secondary education.



Local jurisdictions website directory

CITY OF AUBURN

Website link.

CITY OF BONNEY LAKE

Website link.

CITY OF BUCKLEY

Website link.

CITY OF DUPONT

Website link.

CITY OF EDGEWOOD

Website link.

CITY OF FIFE

Website link.

CITY OF FIRCREST

Website link.

CITY OF GIG HARBOR

Website link.

CITY OF LAKEWOOD

Website link.

CITY OF MILTON

Website link.

CITY OF PACIFIC

Website link.

CITY OF PUYALLUP

Website link.

CITY OF ROY

Website link.

CITY OF SUMNER

Website link.

CITY OF TACOMA

Website link.

CITY OF UNIVERSITY PLACE

Website link.

TOWN OF CARONADO

Website link.

TOWN OF EATONVILLE

Website link.

TOWN OF SOUTH PRAIRIE

Website link.

TOWN OF STEILACOOM

Website link.

TOWN OF WILKESON

Website link.

**PIERCE COUNTY &
UNINCORPORATED PIERCE COUNTY**

Website link.

Meet Our Team



Bruce Kendall

President & CEO
Bruce@edbtacomapierce.org



Deborah Kelly

Director of Operations
Deborah@edbtacomapierce.org



Tamsin Bell

VP, Business Development
Tamsin@edbtacomapierce.org



Sarah Bonds

VP, Business Recruitment
Sarah@edbtacomapierce.org



Maddie Merton

VP, Business Retention
& Expansion
Maddie@edbtacomapierce.org



choosetacomapierce.org



(253) 383-4726



950 Pacific Avenue, Suite 410, Tacoma, WA 98402



info@edbtacomapierce.org

