

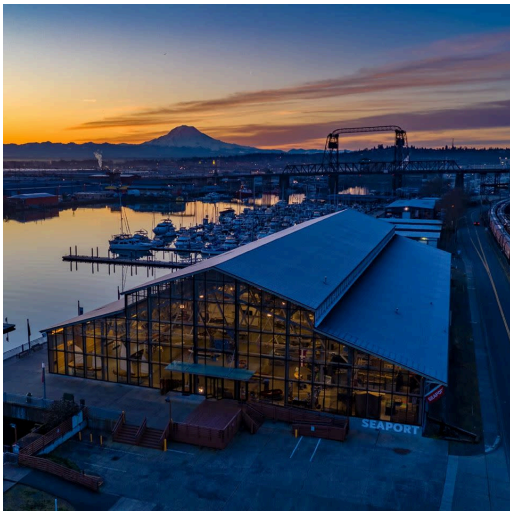
PIERCE COUNTY
WASHINGTON, USA

edb | **ECONOMIC
DEVELOPMENT
BOARD** TACOMA
PIERCE COUNTY

ONWARD

PIERCE COUNTY MEANS BUSINESS

Aug 2025 | No. 303 | ChooseTacomaPierce.org



Voices of Vision: Regional Leaders Speak at Tacoma Business Forum

Presented by Puget Sound Business Journal, the Tacoma Business Forum was held on July 16 from 4-6:30 pm at the Foss Waterway Seaport. Created to hear insights from local business leaders and build new connections, the event featured presentations by Matthew Wadhwani – Tribal Financial Officer/Chief Executive Officer, Puyallup Tribe of Indians/Puyallup Tribe Enterprises, Bill Robertson –

Chief Executive Officer, MultiCare and John McCarthy – Commission President, Port of Tacoma. The one-hour program, book ended with networking opportunities at the beginning and the end of the presentations, was well attended.

Matt Wadhwani of the Puyallup Tribe highlighted the tribe's notable economic achievements, including the establishment of a gaming facility featuring 153 rooms and a 2,000-person events center. This initiative has generated employment, funded educational initiatives, and supported a cancer center. Wadhwani underscored the necessity of strategic partnerships, especially with the Northern Seaport Alliance, to bolster international trade and promote economic growth. Furthermore, he discussed various development projects spanning construction, logistics, and manufacturing, emphasizing the importance of credibility, accountability, and effective marketing in their efforts. With plans to develop a new 20-acre site, the tribe aims to harmonize economic advancement with cultural preservation and community engagement.

Bill Roberston of MultiCare discussed how the healthcare industry faces significant challenges, with the U.S. spending 18% of its GDP on healthcare. Post-COVID, recovery varies regionally, with the South and Southwest faring better due to lower regulations and unionization. Washington and California face severe challenges, with hospitals losing significant sums since 2020. MultiCare, a non-profit with 13 hospitals, has lost \$600 million over three years, despite reinvesting in community care and new technologies. The business environment in Washington is difficult due to increased taxes and regulations. MultiCare is excited about future projects, including a new Children's Hospital and advanced pediatric cardiology services.

John McCarthy - Port of Tacoma and NWSA provided information on the Port Development Update covering several key points. Commissioner McCarthy detailed the construction of a new 60,000 sq. ft. administrative office building and a maritime training facility expected to open in 2026. A partnership with the Tribe is developing a break bulk facility on the Blair Waterway. Trade and tariffs have impacted exports, with a 30% reduction in May. The ports of Seattle and Tacoma, along with the airport, generate \$3 million in economic activity and create 41,000 jobs. Future plans include developing a large cold storage facility and continuing to redevelop contaminated land. The maritime training facility will support vocational education and job opportunities.



Photo courtesy of Port of Seattle

Sustainable Airport Master Plan

On July 8th Eric Schinfeld, Sr Manger of the Federal & International Government Relations for the Port of Seattle/Seattle Tacoma International Airport (SEA) was the presenter at the Pierce County Lunch and Learn. Filled with valuable insights, the presentation gave an overview of the Airport's Master Plan for "Delivering Opportunity".

[Read MORE](#)

The Island Oasis of I-5: Spotlight on DuPont



Located between Tacoma and Olympia on the west side of I-5, there is the charming city of DuPont. According to Keith Campbell, DuPont City Administrator, "We really are like an island oasis with no neighbors on any side of us and only two egress points in and out." Bordered by Joint Base Lewis McChord, bodies of water and a major freeway, the City of DuPont has a tremendous sense of pride and elevated levels of community.

[Read MORE](#)

NEWS BRIEFS & CALLS TO ACTION

Washington State Fair Turns 125

As the largest single event in the state, the Washington State Fair began as a neighborhood celebration of the harvest season, and is now 175-acres of year-round bustle. The Fair closed only twice in its 125 history, during World War II (when the U.S. government used the grounds as a Japanese incarceration camp) and in 2020 (when Washington State gatherings weren't allowed during the COVID-19 pandemic). Throughout the past several decades, the venue has become a destination for non-stop activity including five self-produced events and more than 125 other events. The 125th Washington State Fair will be held from August 29th to September 21st (closed on Tuesdays).

WEDA 2025 Summer Conference

The Washington Economic Development Association is presenting their Summer Conference August 11-13 at Tacoma's Hotel Murano. Titled the ART OF THE POSSIBLE: *Shaping Cutting-Edge Economic Opportunity for Washington's Future*, participants will be invited to join fellow economic development teams, local government, port, business, tribal, workforce/education and community leaders from throughout Washington. There will be opportunities to learn and engage with expert speakers, legislators and professionals on the current state of Washington economic development and gain new tools and insights for economic development in our community.

[Register HERE](#)

NEWS

[Aquagga Mobilizes Steed Systems](#)

[NW Seaport Alliance and Ports of Tacoma & Seattle REPORT](#)

[Commerce to Invest More Than \\$400M to Support Affordable Housing](#)

[Downtown Tacoma Office Sale Closes for \\$2.7M](#)

[Mary Bridge Children's Breaks Ground on Tacoma Therapy Center](#)

Team With Us

253.383.4726

info@edbtacomapierce.org

ChooseTacomaPierce.org



This email was sent to {{ contact.EMAIL }} You received this email because you are registered with Economic Development Board for Tacoma-Pierce County

NOT A SUBSCRIBER? [Sign up](#) for Onward to learn more about building a business in Pierce County

[Unsubscribe here](#)

Onward is a service of the EDB, a non-profit corporation focused on recruitment and retention of primary businesses in Tacoma and Pierce County, Washington, USA.

